

## Why train at Upstate?

- We offer a unique combination of learning opportunities only found in an academic medical center
- Level I trauma center covering 14 counties
- Part of the Gold Standard Stroke team responding to stroke pages
- An interfaith setting with a diverse peer group
- Clinical specialization opportunities that include Pediatrics, Oncology, Neurology, palliative care, outpatient oncology, Acute Care for the Elderly consult team
- End of life training
- Community interaction
- Worship leadership opportunities
- Creative arts opportunities
- Standardized Patient encounters
- A supportive network of staff and volunteers
- Alumni opportunities

## Comments from our alumni

This is my first experience with CPE. It has been a truly meaningful, rich, and rewarding time for learning pastoral care. I am very blessed to be in this program.

Rev. Dorothy Pierce, Episcopal Deacon

I chose Upstate for my four units of CPE for its emphasis on Interfaith Chaplaincy.

Rev. Virginia Lawson, Renzai Zen Buddhist

CPE is about growing spiritually and in your ministry.

Rev. Joe Colon, UCC, Hospital Chaplain

## What are the professional credentials of the supervisor?

Rev. Terry Culbertson, MDIV, BCC, CT, Clinical Pastoral Education Supervisor, is a board certified chaplain with the Association of Professional Chaplains and the only certified ACPE supervisor in CNY. She is also certified in Thanatology: Death, Dying and Bereavement by the Association for Death Education and Counseling. She previously directed pastoral and spiritual care at the Inter-Religious Council of CNY, Loretto Geriatric Center, Manor Healthcare and Hospice of CNY.

She has received awards from the Association of Professional Chaplains, the College of Chaplains, Women's Day magazine, the Syracuse Herald American and the Pastoral Care Network for Social Responsibility.



# UPSTATE

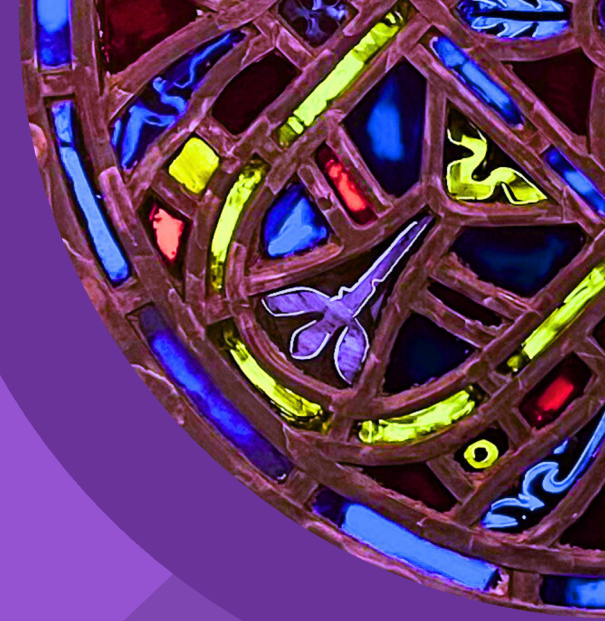
MEDICAL UNIVERSITY

CLINICAL PASTORAL  
EDUCATION PROGRAM

750 East Adams Street  
Syracuse, NY 13210  
(315) 464-4687  
chaplain@upstate.edu



WWW.UPSTATE.EDU/SPIRITUALCARE



## What is Clinical Pastoral Education?

CPE is experiential theological education designed to improve the quality of pastoral care offered by spiritual caregivers of all faiths and levels of experience. Our program uses a reflection-action model of learning that integrates the components of direct spiritual care, personal and theological reflection, supervision, peer review and supportive group process.

As a student in our program, you will become part of an interdisciplinary care team that serves hospitalized patients and their loved ones. This direct service facilitates the application of learned theory and your own personal and pastoral experiences as you minister to patients, families and staff.

## What is the program's accreditation?

Our program is accredited by the Association for Clinical Pastoral Education (ACPE) to offer Levels I, II, and Supervisory CPE\*.

Association for Clinical Pastoral Education  
1 Concourse Parkway Suite 800  
Atlanta, GA 30328  
(404) 320-1472  
[www.acpe.edu](http://www.acpe.edu)



## What is the time commitment?

One unit of CPE is 400 hours. 300 are direct ministry on an assigned patient unit and a weekly shift from 6pm-10pm in the Emergency Department. The other 100 hours are instructional. You will need additional hours outside CPE for reading and writing reflections and verbatims.

## What does the curriculum include?

- Didactics
- Verbatims
- Clinical presentations
- Regular supervision
- Weekly reflective papers
- Televised devotions
- Taped visits with Standardized Patients

## Why do people take CPE?

Some students need CPE to fulfill their requirements for seminary or ordination. Others are entering or are in congregational ministry and find CPE helps deepen their pastoral skills. Our curriculum can also assist individuals preparing for certification as a chaplain.



## Who can apply?

Up to six students are chosen per training unit. Applicants must have graduated from high school or hold a GED. We invite applicants who are spiritually mature, able to utilize supervision for growth, and who desire to learn the art of pastoral care in a clinical setting. You must be from a recognized faith tradition. We do not accept persons with purchased ordinations.

## How to apply

Download an application from [www.acpe.edu](http://www.acpe.edu). Deadlines for our program can be found on our website at [www.upstate.edu/spiritualcare](http://www.upstate.edu/spiritualcare).

## Our students come from:

- Regional seminaries, such as St. Mary's in Baltimore.
- Diverse faith traditions such as United Methodist, Muslim, Roman Catholic, Pentecostal.
- Other lands such as Nigeria, Ghana, Tanzania, and Turkey.

## Our students have been:

Religious and lay persons from many different fields, including teachers, funeral directors, school principals, former drug addicts, a physicist, dairy farmers, nurses, deacons, and former homicide detectives.

\*=Supervisory education has additional requirements outlined in the ACPE certification manual, located at <https://www.manula.com/manuals/acpe/acpe-manuals/2016/en/topic/new-certification-manual>