

UPSTATE COMPREHENSIVE
STROKE CENTER
PRESENTS THE
**REGIONAL UPSTATE STROKE
AND HEALTH SUMMIT (RUSH)**



VIRTUAL **RUSH CONFERENCE SERIES**

STRAUMA

Dr. Timothy M. Beutler
Director of Critical Care Neurosurgery
Assistant Professor of Neurosurgery and Neurology
SUNY Upstate Medical University

Disclosures

- None

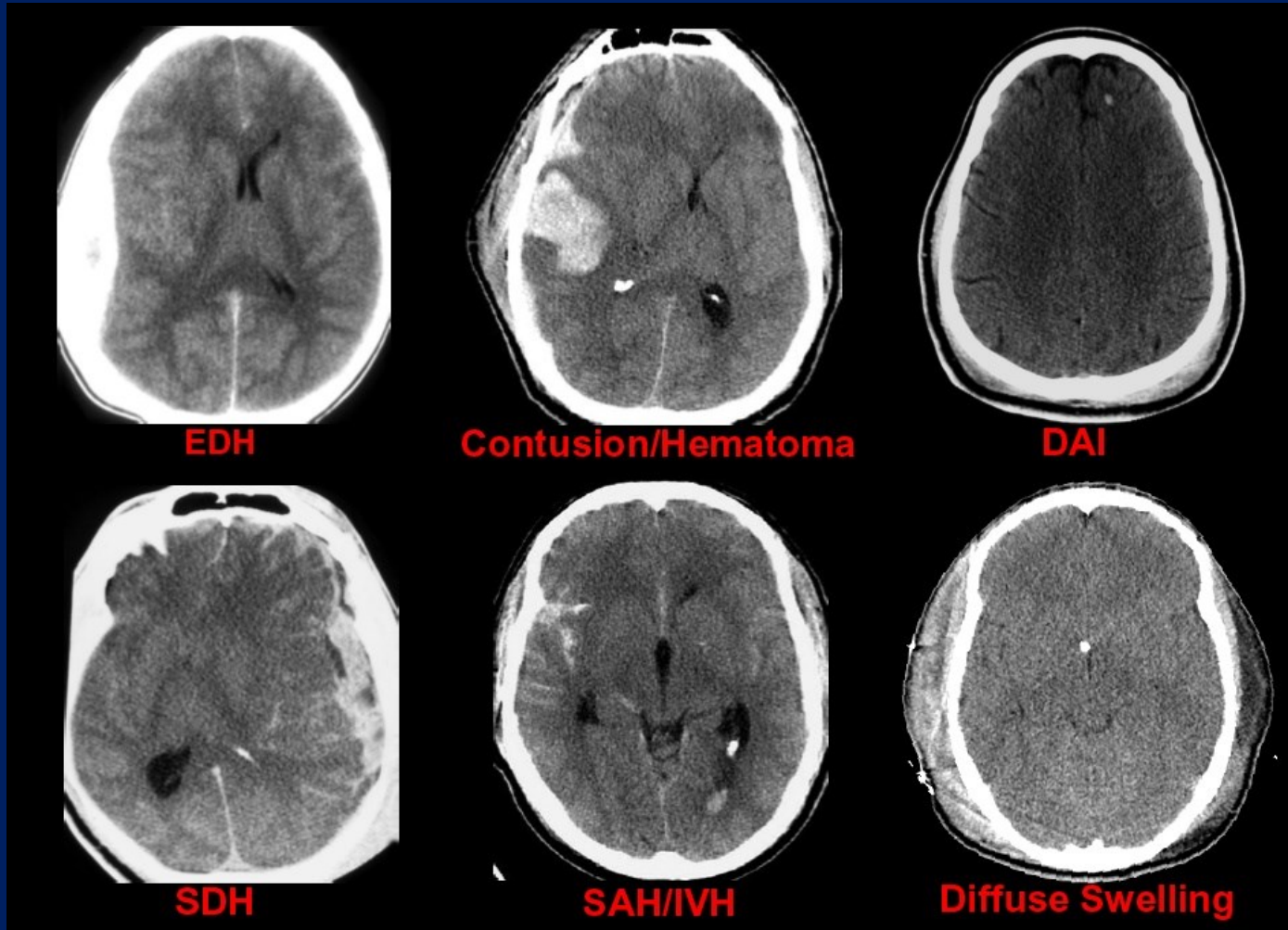
Learning Objective

- To learn about the association between Stroke and Trauma

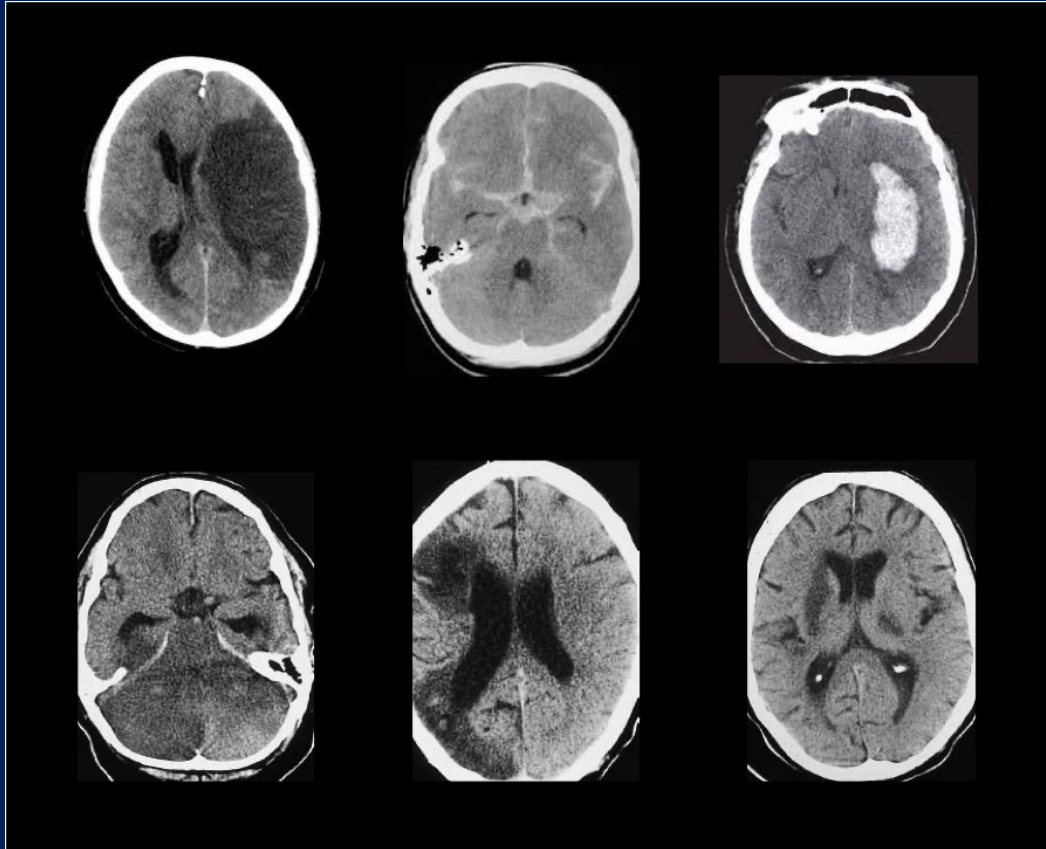
Introduction

- Stroke and Trauma are common causes of death and disability
- Early identification and treatment improves outcomes
- Stroke and traumatic brain injury can have similar clinical presentations
- Strokes and result in trauma
- Trauma can lead to stroke

Various Presentations of Trauma

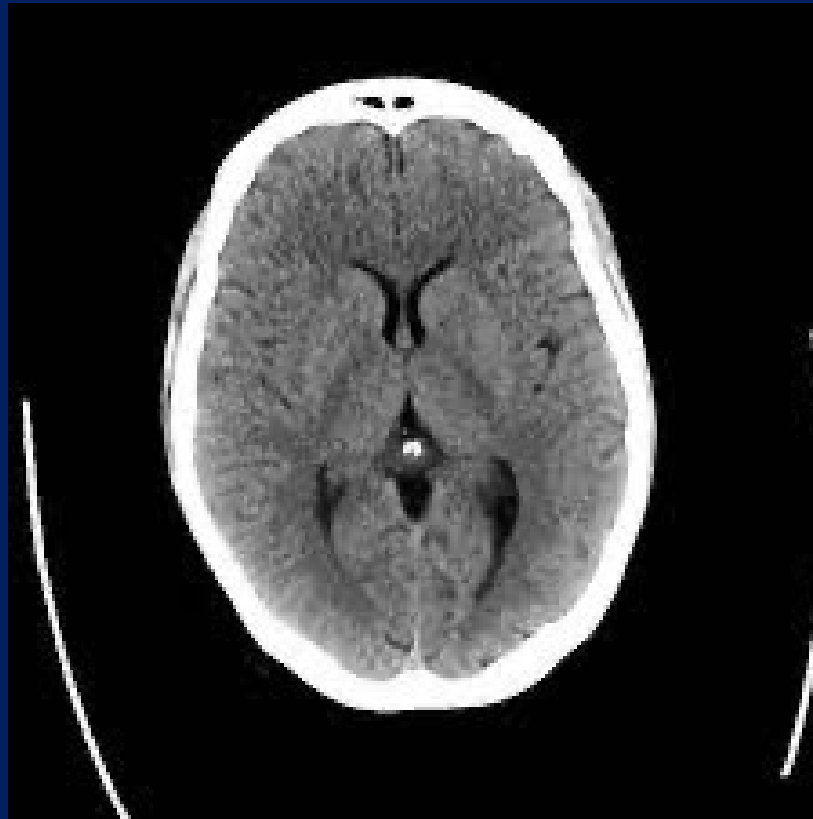


Various Presentations of Stroke

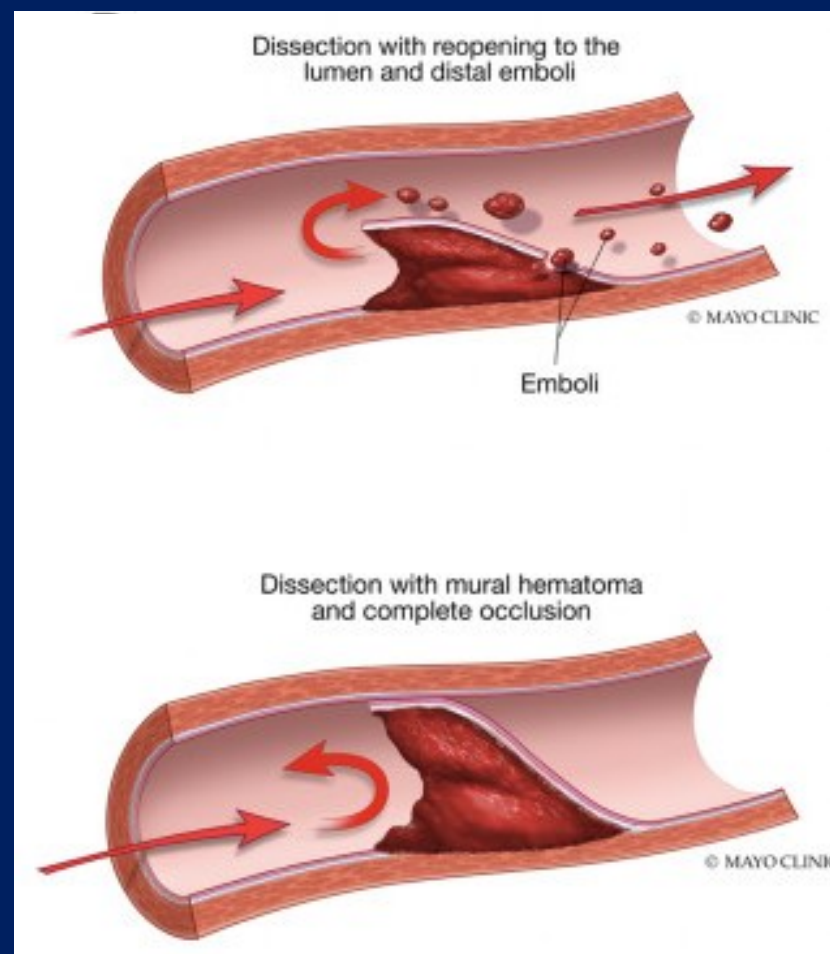


- Large vessel occlusion
- Embolic
- Small vessel disease
- Hypoperfusion
- Subarachnoid hemorrhage
- Intracerebral hemorrhage

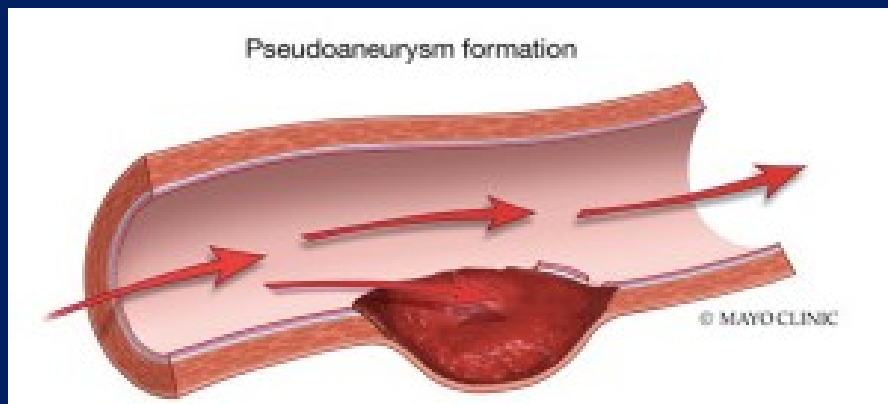
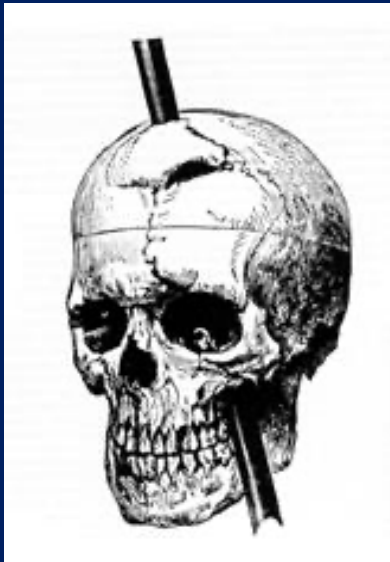
Most Common Imaging Finding for Acute Stroke and Trauma



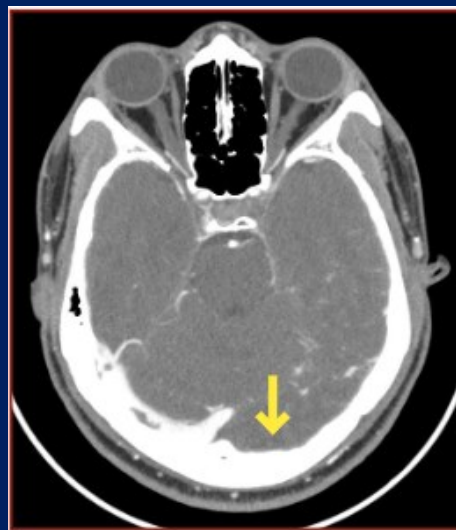
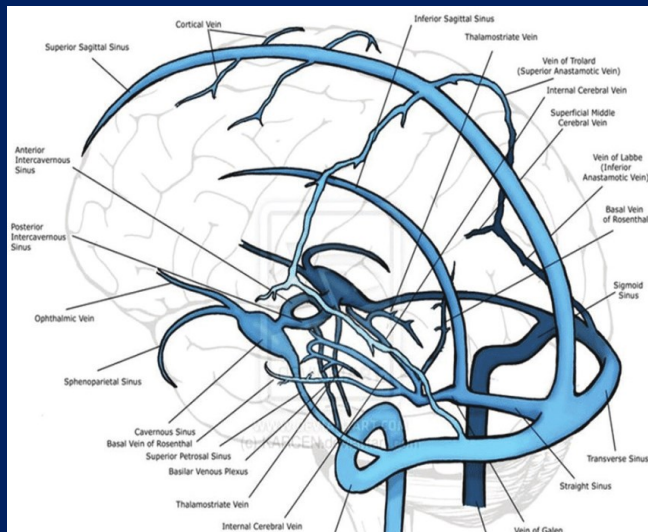
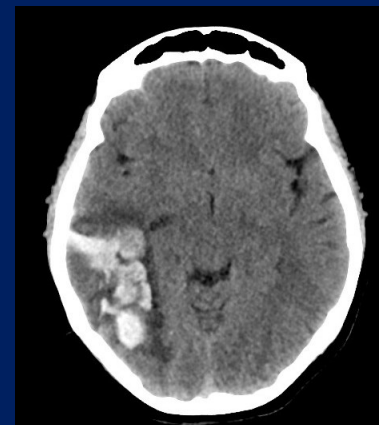
Cervical Trauma and Dissection



Penetrating Injury and Pseudoaneurysm



Skull Fracture and Sinus Thrombosis



STRAUMA CODE

- Simultaneous activation of Stroke and Trauma Codes
- Patients with stroke-like symptoms and potential traumatic injuries
- Goal to increase timeliness of interventions
 - Stabilization for traumatic injuries
 - Identification and treatment of acute stroke

GR:UpstateAdultTrauma
Team:STRAUMA **111-1111**
StraumaStroke Age:90 Male Level 1
Fall --- ETA 15 minutes - Fall from
standing unresponsive hemiparesis
and blown pupil R side

✓ Sent @ 9:11 AM

A

AIRWAY

B

BREATHING

C

CIRCULATION

D

DISABILITY

Questions?