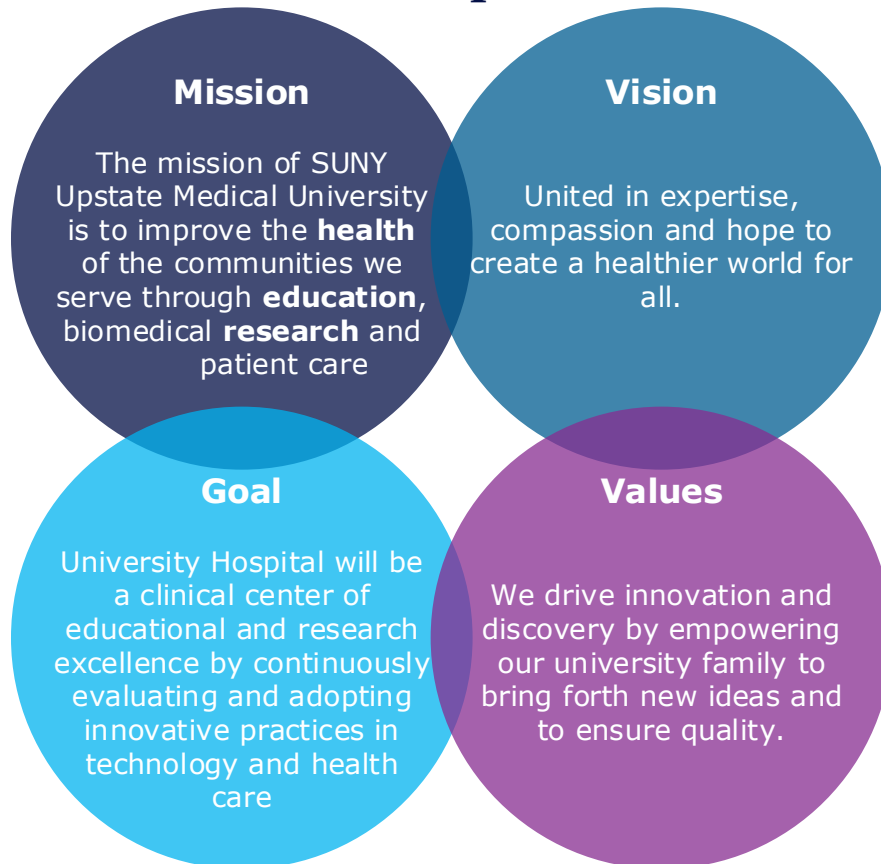




## Advanced Practice Student Placement Requests

### Who is Upstate?



### Health Care

As the only academic medical university for one-third of our state, SUNY Upstate is in a unique position to offer both high-quality health care and educational opportunities to Central New York's 1.8 million citizens – and beyond.

### Education

At Upstate, we educate more than 1,500 students in our four colleges – Medicine, Graduate Studies, Health Professions, Nursing – as well as on our Binghamton Campus. We also host 500 graduate physicians in our residency and fellowship training programs and provide continuing education to practitioners.

### Research

Our fast-growing research enterprise is advanced by our faculty who are investigating more than 600 funded research projects.

### Upstate's Commitment to Diversity



# Advanced Practice Student Placement Requests

## Why Choose Upstate?

Serving as the only academic medical center in Central New York, Upstate Medical University's mission is to improve the health of our community through education, biomedical research and patient care. Affiliated with the State University of New York (SUNY), the Upstate University Health system serves 1.8 million people in a 17-county region and includes Upstate University Hospital, Upstate University Hospital at Community Campus, Upstate Golisano Children's Hospital, and numerous satellite sites and outpatient clinics.

Upstate's research mission is dedicated to improving human health by discovering the knowledge that leads to new cures and treatments. Innovation goes beyond the lab; patients have more access here to clinical trials than any other place in the region.

Upstate currently employs and credentials over 300 Advanced Practice Health Care Providers. These include Certified Midwives & Certified Nurse Midwives (CMs & CNMs), Certified Registered Nurse Anesthetists (CRNAs), Physician Assistants (PAs), and Nurse Practitioners (NPs). The Department of Advanced Practice Services employs Nurse Practitioners and Physician Assistants who work within the following clinical areas:

- Addiction
- Bariatrics
- Behavioral health
- Breast Care Center
- CARE (Child Abuse Referral & Evaluation Program)
- Cardiology
- Cardiothoracic (Inpatient)
- Center for International Health
- ENHANCE Foster Care Program
- Endocrinology
- Family Medicine Clinic
- Heart & Vascular Services
- Inclusive Health Services
- Inpatient & Outpatient Medicine
- Neurology
- Neurosurgery
- Newborn/Neonatal Care
- Obstetrics/Gynecology
- Orthopedics
- Otolaryngology
- Pain Services (Inpatient)
- Palliative Care
- Pediatric Oncology
- Pediatrics (Outpatient & Inpatient)
- Pediatric & Adolescent Center
- Perioperative Medical Home
- Radiology
- Rheumatology
- Surgery
- Trauma
- Transplant
- Urology
- Wound/Ostomy Services

# Advanced Practice Student Placement Requests

## When to Apply?

Requested Rotation Start Date	Application Period	Notification Date
January – April	May 1 <sup>st</sup> – August 31 <sup>st</sup>	September 30
May – July	September 1 <sup>st</sup> – December 31 <sup>st</sup>	January 31
August – December	January 1 <sup>st</sup> – March 31 <sup>st</sup>	April 30

**\*\*\*All requests for student clinical placement must be made by using the online clinical request form found on our website.\*\*\***

Following your application, you will receive email notification of either the approval or denial of your request on or before the above listed notification dates  
(Approximately 8-12 weeks prior to the start date)

### **Please Note:**

A student agreement between Upstate Medical University and your school must be filed before your placement can be approved. Please check with your school representative in order to verify that such an agreement is on file with Upstate.

---

In regards to advanced practice student clinical placement, the following order of priority has been established:

- Priority 1:** Upstate Medical University College of Nursing (CON) and College of Health Professions (CHP) Advanced Practice students
- Priority 2:** Upstate Medical University employees enrolled in other advanced practice programs
- Priority 3:** Advanced Practice Students who are not Upstate Medical University employees or students.

Only after the clinical needs for Upstate Medical University advanced practice students (Priority 1) and employees (Priority 2) are fulfilled will advanced practice students enrolled in other programs (Priority 3) be considered.

Following each request form submission, departmental leadership will review the request. Decisions will be based on each department's ability to meet the needs for the student's education while still providing the same high-quality care to our patients. These placement decisions will not be made on a first-come, first-served basis.

# Advanced Practice Student Placement Requests

## Important Notes

### Limited Capacity

Due to the needs of Upstate's CON and CHP, the following clinical rotations are not typically available to students that fall under **Priority 3**:

- Family Practice / Internal Medicine
- Pediatrics
- Women's Health

### Maintaining Impartiality

Clinical requests **may not** be made privately with a provider. To ensure an unbiased selection process, applying students, faculty advisors, and/or program coordinators are not to contact providers in regards to clinical placements. **Any** agreement found to have been made through a provider and then submitted through our online application **will be denied**.

## Resources

### More About Upstate:

- Upstate Medical University  
<https://www.upstate.edu/about/index.php>

### Other Programs:

- University of Kentucky Health Care  
<https://ukhealthcare.uky.edu/doctors-providers/advanced-practice-providers>
- Penn State Health  
<https://www.pennstatehealth.org/locations/hmc/health-care-professionals/advanced-practice-providers/student-rotations>